

( )

- -  
/ / / /

:

( - )

( - )

%

%

( - )

%

#### **Abstract:**

*This study analyzes the nuptiality phenomenon and its trends in the Gaza Strip from a demo-geographic point of view. During the period 1994-2004, it is noticed that substantial retrogradation in the crude marriage rates have taken place from the reported rates between 1984-1993, while the crude divorce rates remain relatively high during the period 1994 – 2004. The aforesaid retrogradation is due to the socio – economic transitions which have happened to the Palestinian society since the establishment of the Palestinian National Authority in 1994. Also, it is concluded that early marriage of females is common and continuous, where the median age at first marriage was about 19.1 years in 2004. The study has indicated important*

/

1

*demographic transition such as: a clear retrogradation in the total fertility rate from 8.37 live birth per woman in 1992 to 5.8 in 2004. It has also indicated the continuous increase in the percentage of nuclear households from 62.7% in 1995 to about 83.5% in 2004. The research has manifested that the percentage of females singularity show substantial jump to about 10% in the broad age group (30 – 39-year). The study concludes several recommendations in relation to nuptiality to the policy and decision makers.*

: -

( - )

.

.

.

-

-( : )

(Rashad, Osman, and Roudi-Fahimi, 2005:

.2)

.

% , (Dahlan,1987: 177)

( ) .

( : ) .

( )

,

%

% ,

% ,

% ,

.

: ) .

(

.

- :

( : ) .

)

( :

( )

"

"

( ) .

"

"

"

"

.

..

- )

(

.

-

( - )

)

.( :

.

-

( ) ، %

)

( " ، %

- :

:

)

(

( - )

- :

:

-

-

-

-

-

-

- :

)

◦

(

◦

-

-

.( )

.( )

( )

( )



/

/

/

( )

	/	%		/	
		,			
		,			
		,			
		,			
		,			
		,			

:

:

:

:

-

:

-

:

-

-

-

-

-

:

( ) .

% ,

( - )

( - )



( )

		**	*	
-	-			
-	-			
-	-			
-	-			
-	-			
+	+			
-	-			
-	-			
-	-			
-	+			

Palestinian Central \*\*

\*

Bureau of Statistics, 2005

- :

%

( )

-

( )

	%	( )		%	( )	
	'			'		
	'			'		
	'			'		
	'			'		
	'			'		
	'			'		

( ) :

- :

( )

( )

- :

SPSS

( )

• —

—

—

( - )

$$\left( \quad - \quad \right)$$

1

( )

•

( )

( )

—

—

[illegible]

Central Bureau of Statistics of Israel, 1993: :

758 &amp; 760

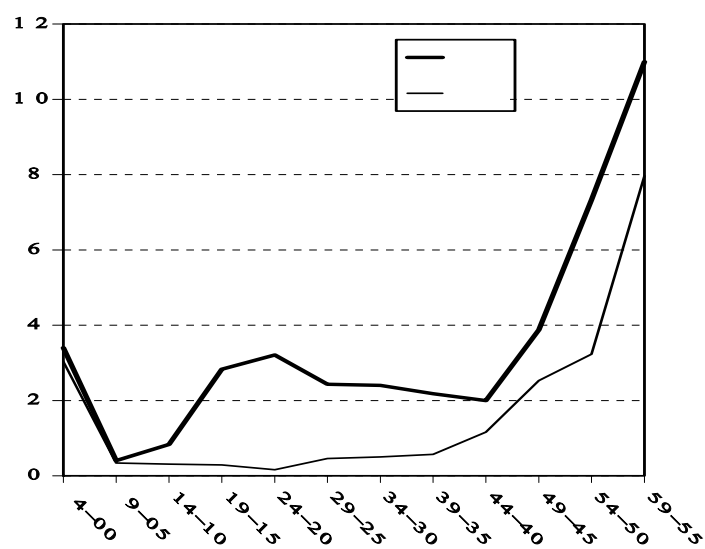
مجلة جامعة الأزهر - غزة، سلسلة العلوم الإنسانية ٢٠٠٧، المجلد ٩، العدد ٢ \_\_\_\_\_ (٢٣٥)

( : ) ( )

( - )

( U )

( )



( - ) ( - ) ( - )

.( ) % , % ,

( )

( )

		*		*	
١	١		١		-
٢	٢		٢		-
٣	٣		٣		-
٤	٤		٤		-
٥	٥		٥		-
٦	٦		٦		-
٧	٧		٧		-
٨	٨		٨		-
٩	٩		٩		-
١٠	١٠		١٠		-
١١	١١		١١		-
١٢	١٢		١٢		-
١٣	١٣		١٣		-
١٤	١٤		١٤		-
١٥	١٥		١٥		+
١٦	١٦		١٦		

١٦ : \*

١٦ .( )

١٦ :

١٦ :

١٦ :

١٦ % ،

١٦ % ،

١٦ % ،

١٦ % ،

١٦ .( )

( )

	%				
'	'				
'	'				
'	'			---	
'	'				

:

:

-

:

( - ) % ,

( ) % , ( + )

( )

" " %  
" " .%

.( )

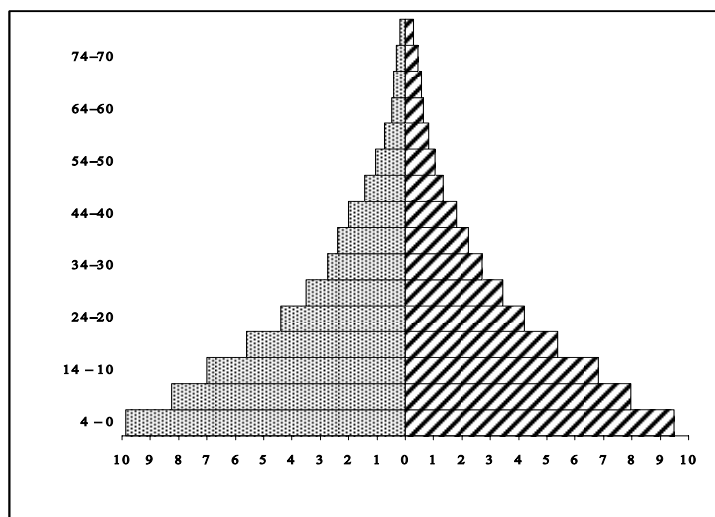
)

(

- ) ( - ) ( - )  
(

	%		%		%		
1	1		1		1		-
2	1		1		1		-
3	1		1		1		-
4	1		1		1		-
5	1		1		1		-
6	1		1		1		-
7	1		1		1		-
8	1		1		1		-
9	1		1		1		-
10	1		1		1		-
11	1		1		1		-
12	1		1		1		-
13	1		1		1		-
14	1		1		1		-
15	1		1		1		-
16	1		1		1		-
17	1		1		1		-
18	1		1		1		-
19	1		1		1		-
20	1		1		1		+
21	1		1		1		
	1		1		1		

( )



:

-

"

:

) "

.(

:

)

.(

.

.

(Stokke, 2001:71 : )

..

.

.

: )

( ) % , .(

( )



.....  
 .( ) % , % , % ,  
 % , % ,  
 . % , % ,  
 ( ) ( )

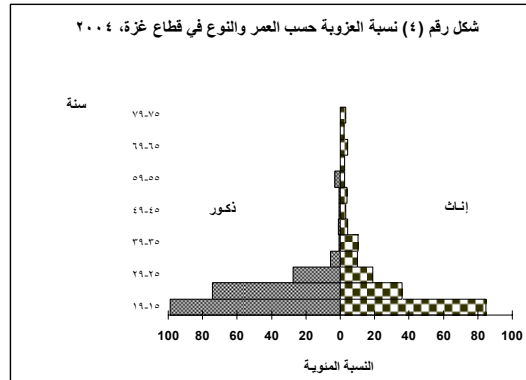
	'	'	'	'	'	-
	'	'	'	'	'	-
	'	'	'	'	'	-
	'	'	'	'	'	-
	'	'	'	'	'	-
	'	'	'	'	'	-
	'	'	'	'	'	-
	'	'	'	'	'	-
	'	'	'	'	'	-
	'	'	'	'	'	-
	'	'	'	'	'	-
	'	'	'	'	'	-
	'	'	'	'	'	-
	'	'	'	'	'	-
	'	'	'	'	'	+
	'	'	'	'	'	

: : :  
 ( ) :  
 , ( - )  
 , ( - ) , ( - ) , ( - )  
 . ,

. % ,

( : )

.  
 % ,  
 - ) % , ( - )  
 . ( - ) % , ( )  
 % , ( - )  
 ( - ) %  
 ( - )  
 ( ) % ,  
 ) % %  
 . (



. (Stokke,2001:74)

)

. ( - )

(

%

.(United Nations ,2004: xv)

( - )

( ) % ،

.( ) % ،

( )

% % ،

( - ) ( - )

% ،

( - ) ( - )

% ، % ،

( )

( )

( )

	'	'	'	'	'	-
	'	'	'	'	'	-
	'	'	'	'	'	-
	'	'	'	'	'	-
	'	'	'	'	'	-
	'	'	'	'	'	-
	'	'	'	'	'	-
	'	'	'	'	'	-
	'	'	'	'	'	-

						-
						-
						-
						-
						+

⋮ ⋮ ⋮

⋮ -

⋮ ⋮

⋮

⋮ )

⋮

⋮ (

)

⋮

⋮ (

⋮

(Shryock and Siegel,

..1976: 333)

⋮

⋮

⋮

⋮

( ⋮ )

⋮ ( ⋮ :

)

⋮

⋮

-

⋮

-

⋮

⋮

⋮

.

( )

( : )

( )

( )

.

( )

( )

.

( ) ( )

.

( )

( )

( )

.

( )

( )

( )

( ) ( )

/

( )

.( : )

(United Nations population

. Fund, 2005: 53)

( )

% ,

.% ,

%

%

) %

%

% ,

.( :

( )

( )		( )
( )		( )
		( )
)		
.(		
		( )
)		
.(		

: ( )

( ) :

:

:

-

( : )

(Clarke, 1972,P.80)

( )

)

.(

( )

/

							/
,	,		,				
,	,		,				
,	,		,				
,	,		,				
,	,		,		( )		
,	,	( )	,	( )	( )		
,	,	( )	,	( )	( )		

United Nations, 2003: several pages :

:

مجلة جامعة الأزهر - غزة، سلسلة العلوم الإنسانية ٢٠٠٧، المجلد ٩، العدد ٢ (٢٤٨)



( )

Palestinian Central Bureau of Statistics, 2005 ( )

( )

)

.( :

، -

( - )

،

،

( )

، % ، %

- ( )

%							
---		،	،	،			
، -		،	،	،			
، +		،	،	،			
، +		،	،	،			
، +		،	،	،			
، -		،	،	،			
، -		،	،	،			
، -		،	،	،			
، -		،	،	،			

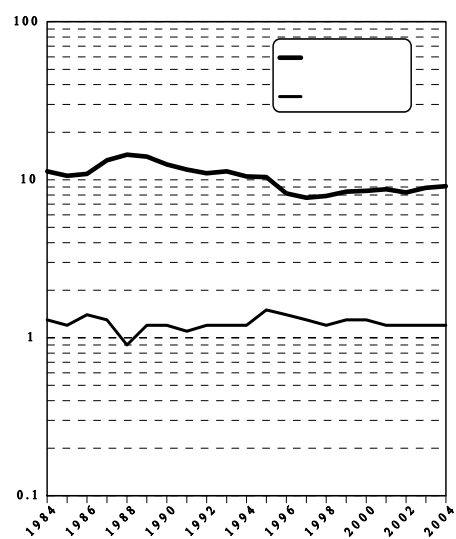
$\frac{1}{t} +$		$\frac{1}{t}$	$\frac{1}{t}$	$\frac{1}{t}$			
$\frac{1}{t} +$		$\frac{1}{t}$	$\frac{1}{t}$	$\frac{1}{t}$			
$\frac{1}{t} +$		$\frac{1}{t}$	$\frac{1}{t}$	$\frac{1}{t}$			
$\frac{1}{t} -$		$\frac{1}{t}$	$\frac{1}{t}$	$\frac{1}{t}$			
$\frac{1}{t} +$		$\frac{1}{t}$	$\frac{1}{t}$	$\frac{1}{t}$			
$\frac{1}{t} +$		$\frac{1}{t}$	$\frac{1}{t}$	$\frac{1}{t}$			
$\frac{1}{t} +$		$\frac{1}{t}$	$\frac{1}{t}$	$\frac{1}{t}$			
$\frac{1}{t} +$		$\frac{1}{t}$	$\frac{1}{t}$	$\frac{1}{t}$			
$\frac{1}{t} +$		$\frac{1}{t}$	$\frac{1}{t}$	$\frac{1}{t}$			
$\frac{1}{t} -$		$\frac{1}{t}$	$\frac{1}{t}$	$\frac{1}{t}$			
$\frac{1}{t} +$		$\frac{1}{t}$	$\frac{1}{t}$	$\frac{1}{t}$			
$\frac{1}{t} +$		$\frac{1}{t}$	$\frac{1}{t}$	$\frac{1}{t}$			

:

( )

-

( )



( )

( )

( )



:

:

:

( )

%

مجلة جامعة الأزهر - غزة، سلسلة العلوم الإنسانية ٢٠٠٧، المجلد ٩، العدد ٢ (٢٥١)

% ,

( , + )

( , ) ( )

.( , ) ( )

"

( : ) "

" ( ) : ﷺ

: ) " :

.(

( )

	%		%		
/	/		/		
/	/		/		
/	/		/		
/	/		/		
/	/		/		
/	/		/		
/	/		/		
/	/		/		
/	/		/		
/	/		/		
/	/		/		
/	/		/		
/	/		/		
/	/		/		

: :

( )

( )

( )

( )

( )

( )				( )				
	*				*			
/	/	/		/	/	/		
/	/	/		/	/	/		**
/	/	/		/	/	/		
/	/	/		/	/	/		
/	/	/		/	/	/		

:

= \*

: \*\*

=

:



( ) % ، ( )  
.( ) % ،

% ، ( - )  
.( - ) % ، ( - )

" "  
" "

.( )

.( )

( ) -

( )



:

% ، % ، % ،

% ، % ، % ، ( ) ( - ) ( - ) ( )

% ، % ،



% ،

% ، %

% % ،

% ، % ،  
% ، %

.( )

( )

'	'	'	'	'	'	
'	'	'	'	'	'	
'	'	'	'	'	'	
'	'	'	'	'	'	
'	'	'	'	'	'	
'	'	'	'	'	'	
'	'	'	'	'	'	
'	'	'	'	'	'	/

∴ ∴

( - )

' ,  
- % ,  
' ,  
. % ,

·  
: - :

. (Stokke, 2001: 71)

·  
·

... ..

( )

·

·

-

·

( )

( - )						
( ) ,	( ) ,	( ) ,	( ) ,	( ) ,	( ) ,	
( ) ,	( )	( ) ,	( ) ,	( ) ,	( ) ,	*
( ) ,	( ) ,	( ) ,	( ) ,	( ) ,	( ) ,	
,	,	,	,	,	,	
,	,	,	,	,	,	
,	,	,	,	,	,	
,	,	,	,	,	,	
,	,	,	,	,	,	
,	,	,	,	,	,	
,	,	,	,	,	,	
,	,	,	,	,	,	
,	,	,	,	,	,	
,	,	,	,	,	,	
,	,	,	,	,	,	

United Nations Population Fund, 2005, United Nations Population Fund and Population Reference Bureau, 2005, pp184-213.

( ) ( ) :

( )

( - )

( )

:

( - )

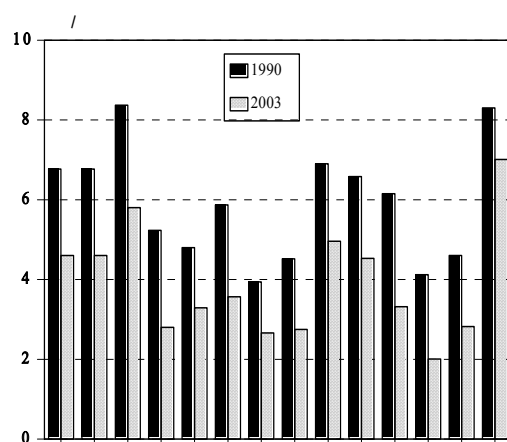
أ-

ب-

( )

.( ) .

( )



/

( )

,

:

( )

( )		( )		
/	/	/	/	
/	/	/	/	
/	/	/	/	
/	/	/	/	
/	/	/	/	
/	/	/	/	

: ( ) :

( )

أ-

-

ب-

ت-

ث-

ج-

:

( )

( )

( )	( )	( )	( )	( )	( )	
,	,	,	,	,	,	
,	,	,	,	,	,	
,	,	,	,	,	,	
,	,	,	,	,	,	
,	,	,	,	,	,	
,	,	,	,	,	,	

( ) :

( )  
( )

( )  
أ-

ب-

ت-

(Population Reference Bureau, 2004:

.18)

)

.(

( )

( )		( )		
,	,	,	,	
,	,	,	,	
,	,	,	,	
,	,	,	,	
,	,	,	,	

:

( ) :

( )

,

,

,

.

.

-

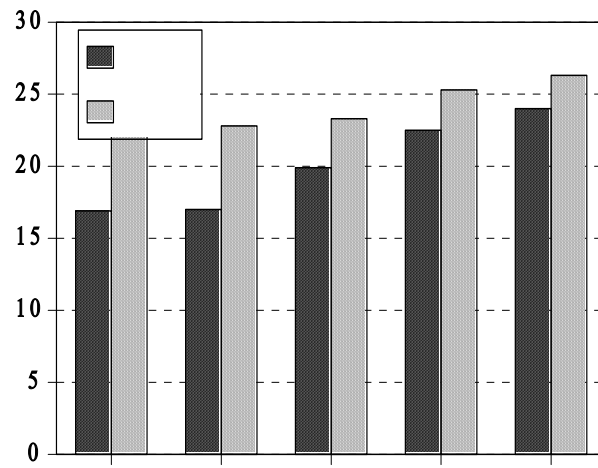
)

.(



( : )

( )



: - :

( )

( )

( )	( )	( )	( )	( )	( )	
'			'			
'			'			
'			'			
'			'			
'			'			
'			'			

: ( ) :

: ( )

: ( )

: :

:

: -

.( : )

( )

.( : ) "

.(Rashad, Osman, and Roudi-Fahimi, 2005: 3)

% , % ,

% ,

.( ) % ,

%

% %

( )

'		'		
'		'		-
'		'		-
'		'		+
'		'		

: :

% , ( )

% ,

% ،

% ،

% ،

% ،

( )



: :

% ،

% ،

% ،

% ،

- :

( - )

( - )

( - ) (Singh and Smarar,1996:151).

( - ) % %  
( : )

( - )

% , % ,  
)

% , % (

.( )

% % %  
( : ' )

, % , %

.( ) %

( - ) ( )

,	,	,	,	,	,	( )
,	,	,	,	,	,	( )
,	,	,	,	,	,	( )

- : ( ) :

( )

.

%

% , . % ,

% ,

. % ,

.

. % , % ,

( )

.

( )	( )	( )	( )	( )	( )	
,	,	,	,	,	,	
,	,	,	,	,	,	-
,	,	,	,	,	,	-
,	,	,	,	,	,	+
,	,	,	,	,	,	

( ) : :

.

: ( )

( )

%

%

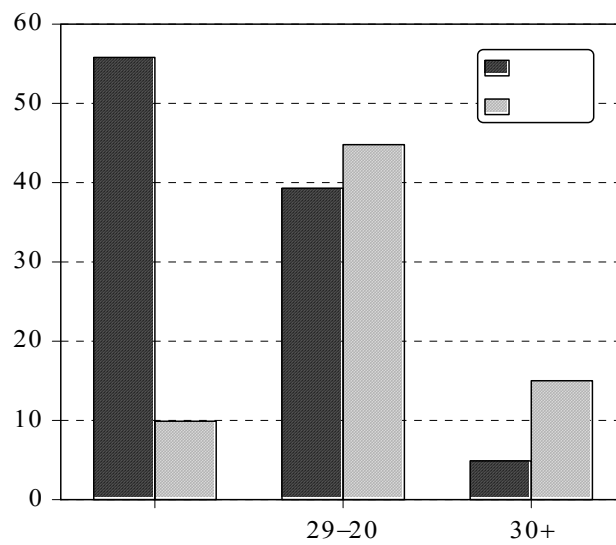
% ،

( - )

( )

% ،

( )



( )

% ، %

% ،

( )

.( )

( )

/	/	/	/	/	/	/	/	/	/	>
/	/	/	/	/	/	/	/	/	/	-
/	/	/	/	/	/	/	/	/	/	-
/	/	/	/	/	/	/	/	/	/	+

∴ ∴ ∴

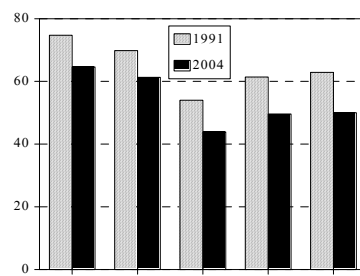
∴ ∴ ∴

% ،

% ،

( : )

( )







% ،

% ،

% ،

% ،

( )

				( )
	**		*	

:

:

( )

\*

( )

\*\*

)

(

( )

<i>I</i>	<i>I</i>	<i>I</i>	<i>I</i>	<i>I</i>	
		---	---	<i>I</i>	*
		---	<i>I</i>	**	
		<i>I</i>	***		

( )

$$\vdots$$

—

% , % ,

% , —

( ) %

% —

% ,

% , -

%

( )

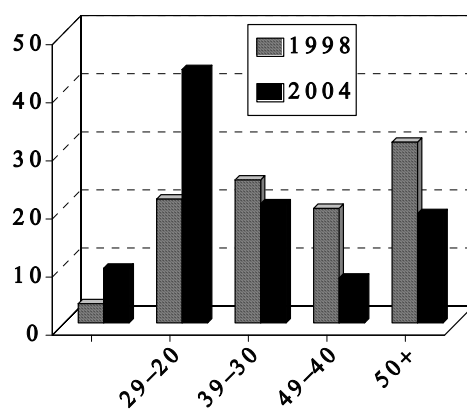
						-
						-
						-
						+

:

:

:

( )



:

-

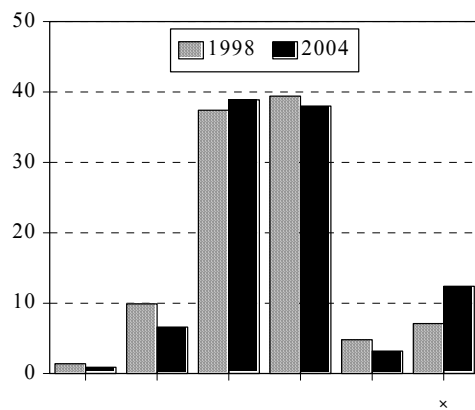
( ) :  
 % ، -  
 ( ) % ، -  
 % ، % ،  
 % ، -  
 % ،  
 ( )

( )		( )		
/	/	/	/	
/	/	/	/	
/	/	/	/	
/	/	/	/	
/	/	/	/	
/	/	/	/	
/	/	/	/	

:  
 ( ) :  
 ( )

% ،  
 %

( )



( , + )

( , )

( )

.( , ) ( )

:

-

:

:

-

( )

( )

( - )

( )

( )

( )

( )	( )	( )	
'		'	-
'		'	-
'		'	-
'		'	-
'		'	-
'		'	-
'		'	-
'	'	'	

Palestinian Central Bureau of ( ) : ( ) :  
Statistics, 2001: 63

: ( )

( )

, ( - )

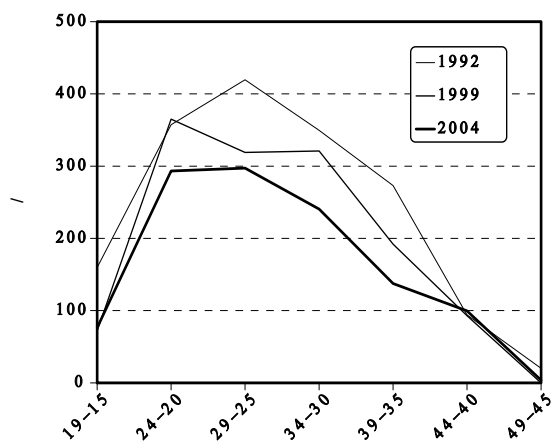
( - ) ( - )

( - )

( - )

( )

( )



( - : )

...

% ,

% ,

% , % , % ,

:

-



% , /

% ,

/

( )

.

-

.( )

-

( - )

)

% ,

) % ( :

.( :

-

.

:

-

( )

% ,

% ,

% ,

.

)

( )

( )

(

.

( )

.( :

( )

( )	( )	( )	
,	,	,	
,	,	,	
,	,	,	
,	,	,	
,	,	,	

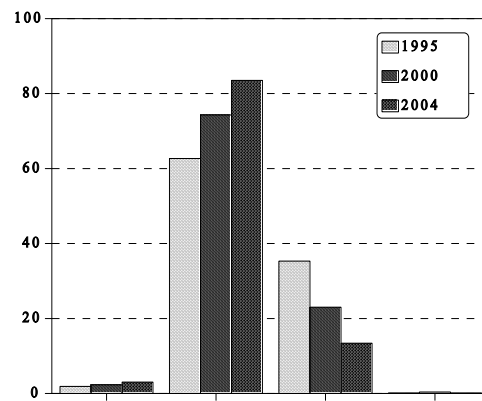
Palestinian Central Bureau of Statistics, 2001: 51 ( ) :

: ( )

% , .  
 .( ) % , %  
 % % , % ,  
 .  
 % , .  
 % , %  
 . % , % , % ,  
 % %  
 % ,

.( Nosseir,2004:6)

( )



:( )

( )

( )

( )

.  
 .  
 %  
 %  
 %  
 %  
 )  
 %  
 ( :  
 ( )  
 % ,  
 % ,  
 .  
 ( ) ( )

/		/		-
/		/		-
/		/		-
/		/		-
/		/		-
/		/		-
/		/		-
-	-	/		-
-	-	/		-
-	-	/		-
-	-	/		-
/		/		( - )

.( ) :

( - ) % ،  
 ( - ) %  
 ( - ) ( - )  
 . ( ) %  
 % ،  
 ( - ) % ، ( - ) % ، ( - )  
 . ( : )

"

.(McFallsJr., 2003: 27) "

( )  
 ( - ) ( )

% ،

$( :$ 

•

( - )

( - )

( - )










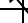










( - )

( - )

$$\dots \left( - \right)$$

( )

( )

( ) ( - )			( ) ( - )			
						-
						-
						-
						-
						-
						-
						-
						-
						-
						-

( )

( ) :

.( )

( )

•

•

—j

ب-.

( )

ت-.

ث-.

ج-.

ح-.

%

خ-.

د- )

(

:

:

١-.

-٢-

-٣- ( - )

% , %

-٤-

( )

-٥-



-٦-

( ) ( )

-٧-

( . . )

( : )

"

.( : ) "

,  
,  
:  
[  
: [ (Newell, 1986: 79-81) -

-٨-

( )

-٩-

-١٠-

% , % ,

$$\begin{aligned} & \quad \quad \quad ( \quad ) \quad \quad \quad -11 \\ & \quad \quad \quad ( \quad - \quad ) \quad ( \quad - \quad ) \quad ( \quad - \quad ) \\ & \quad \quad \quad \% \quad \quad \% \quad , \quad \% \quad , \end{aligned}$$

-12

$$\begin{aligned} & \quad \quad \quad \% \quad , \quad \quad \% \quad , \\ & \quad \quad \quad : \\ & \quad \quad \quad : \\ & \quad \quad \quad - \\ & \quad \quad \quad ) \\ & \quad \quad \quad . ( \quad : \end{aligned}$$

( ) .

-

( )

%

-

..

-

.

-

.

-

.

-

( )

( )

( ) -

:

( ) -

: ( ) -

( ) -

:

<http://www.albayan.co.ae/albayan/alarbea/2003/issue200/venue/3.htm>

( ) -

(

( ) -

- ( ) -

( ) -

( ) -

( ) -

( )

( ) -

( )

( )

-

-

( )

-

-

:

[http://www.pcbs.gov.ps/Portals/\\_pcbs/intifada/martyrs\\_a.aspx](http://www.pcbs.gov.ps/Portals/_pcbs/intifada/martyrs_a.aspx)

( )

-

.

( )

-

.

( )

-

.

)

( )

-

(

( )

-

.

( )

-

:

HYPERLINK

"http://www.nesasy.com/corners/mazenalshikh/2005/mazenalshikh-151200402.html"

( )

-

.

( )

-

:

.

( )

-

.( )

( ) -

:

( ) -

( ) -

:

<http://www.pfppa.org/index.php?action=fullnews&id=92>

( ) -

( ) -

:

( ) -

( )

( ) -

( )

( ) -

( ) -

:

<http://www.apf.org.jo/ar-agenda.html>

( ) -

( )

- ..... : ( ) -
- ..... ( )
- ..... ( ) -
- ..... ( )
- ..... ( ) -
- ..... -
- ..... : ( ) -
- ..... :
- [http://www.jalili48.com/pub/ar\\_Artshw.asp?ID=248](http://www.jalili48.com/pub/ar_Artshw.asp?ID=248)
- ..... ( ) -
- ..... :
- <http://www.popcouncil.org/arabic/publications.html>
- ..... ( ) -
- ..... ( ) -
- ..... : ( ) -
- ..... (

- 1- Central Bureau of Statistics of Israel (1993) **Statistical Abstract of Israel no.44**, Jerusalem.
- 2- Clarke, J. I. (1972) **Population Geography**, Second Edition, Pergamon Press, Oxford, UK.
- 3- Dahlan, A.S.M. (1987) **Population Characteristics and Settlement Changes in the Gaza Strip**, Unpublished Ph.D. Thesis, Department of Geography, University of Durham, UK.
- 4- McFalls Jr. J. A. (2003) **Population: A Lively Introduction, 4<sup>th</sup> Edition**, Population Bulletin, Vol.58, No.4, December, Population Reference Bureau, Washington, USA.
- 5- Newell, C. (1986) **A Manual of Formal Demography**, Centre for Population Studies, London School of Hygiene and Tropical Medicine.

- 6- Nossair, N. (2003) Family in the New Millineum: Major Trends Affecting Families in North Africa, In: **Major Trends Affecting Families: A Background Document**, United Nations 2003-4, Division for Social Policy and Development.
- 7- Palestinian Central Bureau of Statistics ( 2001) **Health Survey 2000, Final Report**, Ramallah, Palestine.
- 8- Palestinian Central Bureau of Statistics ( 2005) **Marriages and divorces Registered in the Palestinian Territory by Governorate(1997-2004)**, Ramallah, Palestine. See Web-site: <http://www.pcbs.org>
- 9- Population Reference Bureau (2004) Transitions in World Population, **Population Bulletin**, vol.59, No.1, March, Washington.
- 10- Rashad, H., Osman, M., and Roudi-Fahimi, F. (2005) **Marriage in the Arab World**, Population Reference Bureau, Washington, USA.
- 11- Shryock, H.S. and Siegel, J.S. ( 1980) **The Methods and Materials of Demography**, Condensed edition by Edward G. Stockwell, Academic Press, INC., Orlando, Florida, U.S.A.
- 12- Singh, Susheela and Samara, Renee (1996) Early Marriage Among Women in Developing Countries, **International Family Planning Perspective**, vol.22, pp148-175.
- 13- Stokke, Liv Jorunn (2001) Marriage Patterns, In Pedersen, J., Randall, S. and Khawaja, M. eds. **Growing Fast: The Palestinian Population in the West Bank and Gaza Strip**, Fafo-report353, Fafo Institute for Applied Social Science, Norway.
- 14- United Nations (2004) World Fertility Report 2003, Department Of Economic and Social Affairs, Population Division, New York, see: Web-site [http://www.un.org/esa/population/publication/worldfertility/World\\_Fertility\\_Report.htm](http://www.un.org/esa/population/publication/worldfertility/World_Fertility_Report.htm)
- 15- United Nations (2005) **World Fertility and Marriage Database 2003**, Pop/DB/Fert/Rev.2004 , Department of Economic and Social Affairs, Population Division, New York.
- 16- United Nations Environment Programme ( 2003) **Desk Study on the Environment in the Occupied Palestinian Territories**, Nairobi, Kenya.
- 17- United Nations Population Fund (2005) **UNFPA Worldwide : Population, Health& Socio-Economic Indicators/ Policy Developments**, see: [http:// www.unfpa.org/profile/compare.cfm](http://www.unfpa.org/profile/compare.cfm).
- 18- United Nations Population Fund and Population Reference Bureau (2005) **Country Profiles for Population and Reproductive Health, Policy Developments and Indicators 2005**